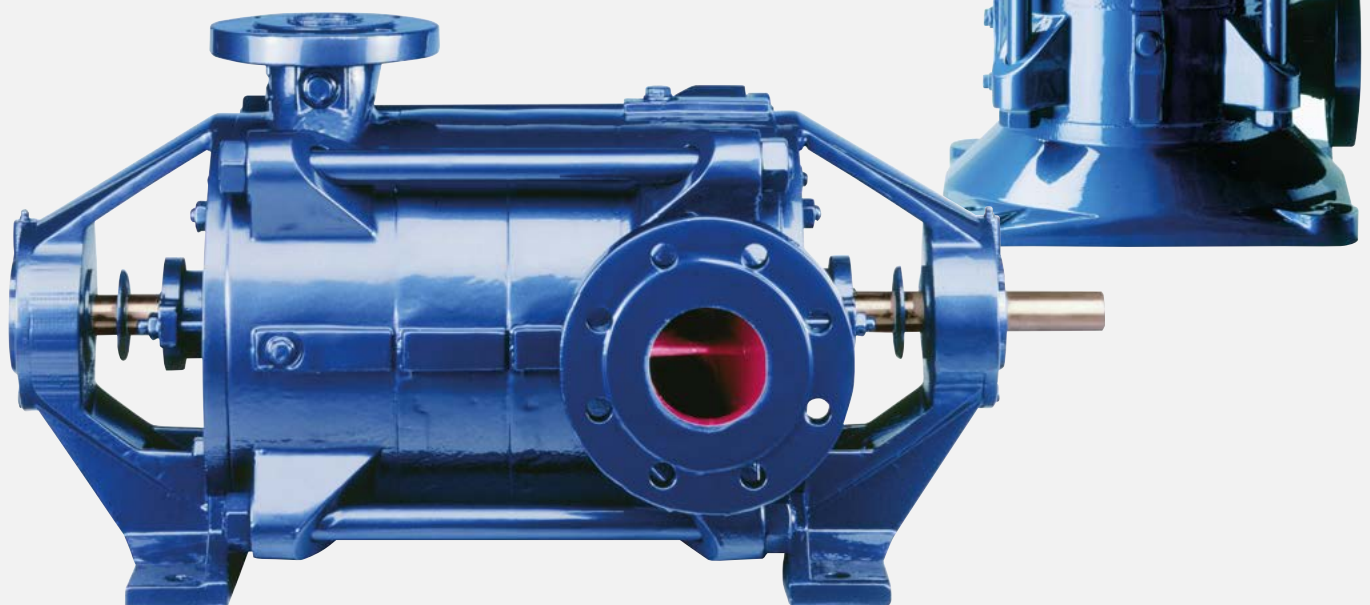


HIGH PRESSURE CENTRIFUGAL PUMPS

NMH / NMV

Non-selfpriming multistage high pressure centrifugal pump
in horizontal (NMH) and vertical (NMV) design

For the pumping of clear and slightly contaminated liquids in:
pressure boosting systems, central heating, cold and hot water circulation,
water supply systems, shipbuilding, the mining industry, power stations,
filter units, fire extinguishing and irrigation plants





A motor controller which consists of a motor and an integrated, fully programmable frequency controller is optionally available. This controller provides exact and quick adjustment to changing operating conditions.

- high efficiency
- low-noise operation
- modular construction
- optimal adjusting to the operating point
- exchangeable shaft sleeves
- use of high grade material
- little maintenance necessary
- easy to service
- ATEX conformity

NMH / NMV

LIQUIDS

Fresh water, drinking water, boiler feed water, process water, sea and brackish water, hot water, condensate, lyes, etc

MATERIALS

Depending on the requirements of the liquids or the customers' requests, available in cast iron, stainless steel, bronze

TECHNICAL DATA

● Capacity	up to 220 m ³ /h (970 USGPM)
● Head	up to 400 m (1312 ft)
● Speed	up to 3.500 rpm
● Temperature	up to 140 °C (284 °F)
● Casing Pressure	up to 40 bar
● Shaft Sealing	Gland packing or mechanical seals*
● Lubrication	Antifriction bearings grease lubricated Slide bearings liquid lubricated
● Flange	Discharge branch: from DN 32 to DN 80 Suction flange: DIN 2535, PN 40 Discharge flange: DIN 2535, PN 40

* according to product profile